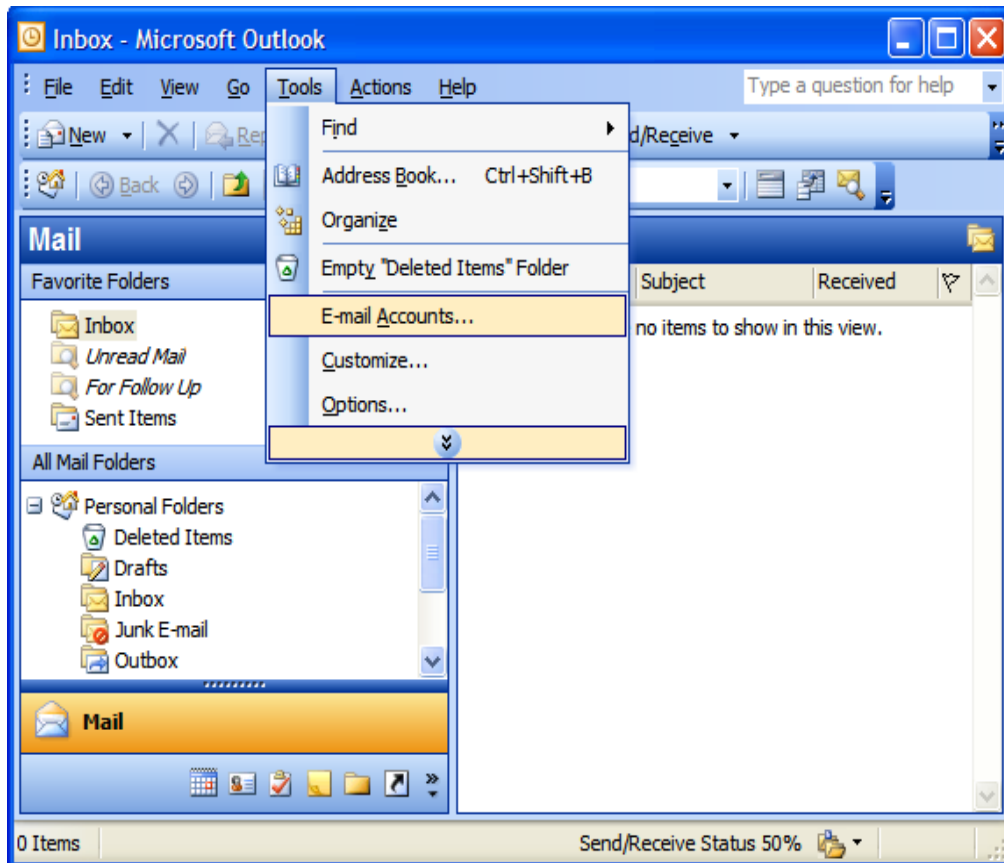


Configure Outlook 2003 with TechTriad / GreensboroNet Settings Server 2

1. Click **TOOLS**, then **Email Accounts**



2. Under Email Accounts, select View or Change Existing Email Accounts
3. Choose Next.
4. Under the email accounts setup box replace the POP3 and SMTP servers with mail.yourdomain.com and the SMTP address of your Internet provider.
5. Under login information, your username is your entire email address.



Follow us on Facebook and Twitter.



THESE ARE NEW SETTINGS BEGINNING IN JULY 2010

E-mail Accounts

Internet E-mail Settings (POP3)
Each of these settings are required to get your e-mail account working.

User Information

Your Name:
E-mail Address:

Server Information

Incoming mail server (POP3):
Outgoing mail server (SMTP):

Logon Information

User Name:
Password:
 Remember password
 Log on using Secure Password Authentication (SPA)

Test Settings

After filling out the information on this screen, we recommend you test your account by clicking the button below. (Requires network connection)

[Click Here >>](#)

6. Red Area server setting enlarged
mailhop2.greensboronet.com

7. Select "More Settings"

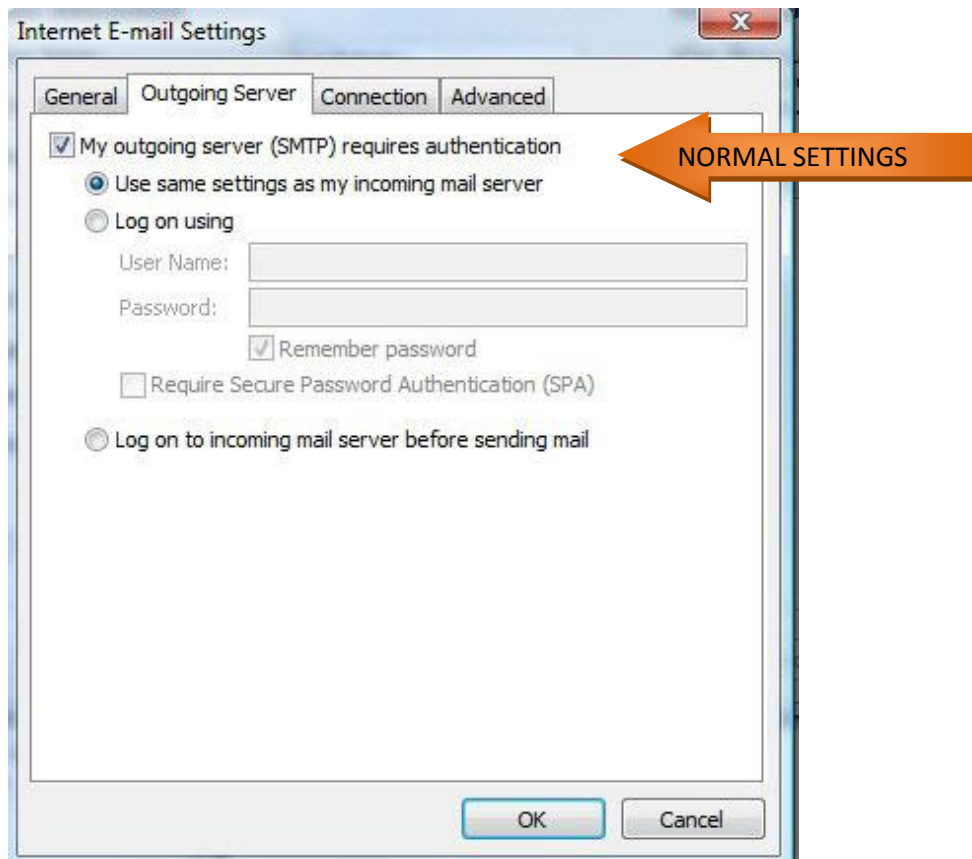


Follow us on Facebook and Twitter.



9. Select the Outgoing mail server tab and select the check box “My outgoing server (SMTP) requires authentication” and the first radiobutton

NOTE: due to spam controls in place, you need to know your username and password for your email account at your current Internet provider.



10. Click OK, a restart may be required

11. Click Send/Receive to verify your settings



Follow us on Facebook and Twitter.

